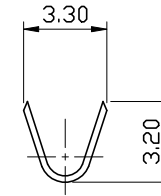
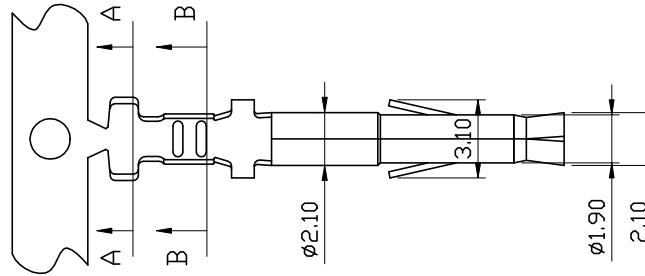


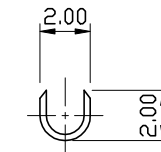
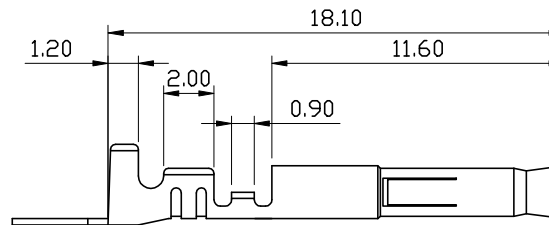
# Power Supply Connector $\text{AE}1.3\text{mm}$

TERMINAL PART NO: 1012BS-2

- Material: Brass
- Plating: Tin
- Thickness: 0.20mm
- Wire Range: AWG 18-22
- Packing: 8,000 pcs/ roll  
(For Male & Female)
- Accepts Housing: 1.3P



A-A SECTION



B-B SECTION

HO TIEN PRECISION INDUSTRY CO., LTD.  
合田精密工業股份有限公司

RECORD OF REVISION / 修定內容	REV.BY / 修定者	REV. DATE / 修定日期	PART NO. / 型號	1012BS-2	APPROVED BY / 核准	
			METERIAL / 材質	BRASS t0.2mm	CHECKED BY / 審查	
			TREATMENT / 表面處理	Tin	DRAWN / 製圖	
			CUSTOMER / 客戶名稱		DATE / 製圖日期	
			UNIT / 單位	mm	SCALE / 比例	1/3
					DRAWING TYPE / 圖面種類	