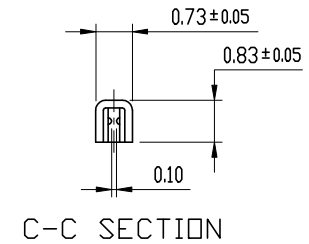
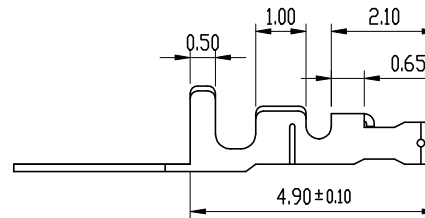
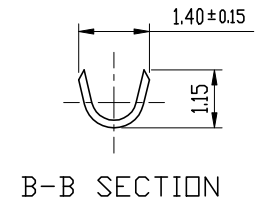
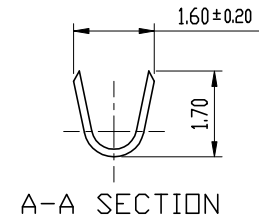
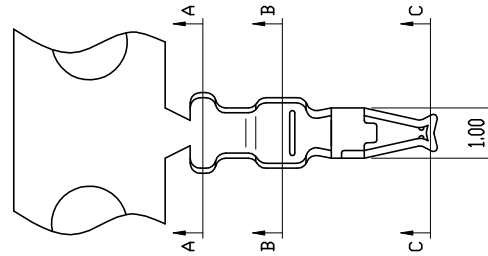


# 1209 Series

## TERMINAL PART NO: 1209PS-2

- Material: Phos. Bronze
- Finish: Tin/Plated
- Thickness: 0.15mm
- Plating: Tin plated 60μ”
- Insulation O.D.: 1.0mm(MAX)
- Q' TY: 10,000 pcs/bag
- Applicable Wire: AWG#28-32
- Accepts House: 1209H



HO TIEN PRECISION INDUSTRY CO., LTD.  
合田精密工業股份有限公司

RECORD OF REVISION / 修定內容	REV.BY / 修定者	REV. DATE / 修定日期	PART NO. / 型號	1209PS-2	APPROVED BY / 核准	
			METERIAL / 材質	Phos. Bronze	CHECKED BY / 審查	
			TREATMENT / 表面處理	Tin/Plated	DRAWN / 製圖	
			CUSTOMER / 客戶名稱		DATE / 製圖日期	
			UNIT / 單位	mm	SCALE / 比例	1/2
					DRAWING TYPE / 圖面種類	